

From: [Deibert, Pat](#)
To: [Jesse DElia](#)
Subject: Fwd: draft map
Date: Thursday, February 26, 2015 3:14:53 PM
Attachments: [DOC.PDF](#)

----- Forwarded message -----

From: **Hendricks, Kathleen** <kathleen_hendricks@fws.gov>
Date: Thu, Feb 26, 2015 at 12:30 PM
Subject: draft map
To: Pat Deibert <pat_deibert@fws.gov>

our GIS person put this together based on layers provided by Lara I believe.....we would like to excise areas where federal lands overlaps onto general and non-habitat.

--

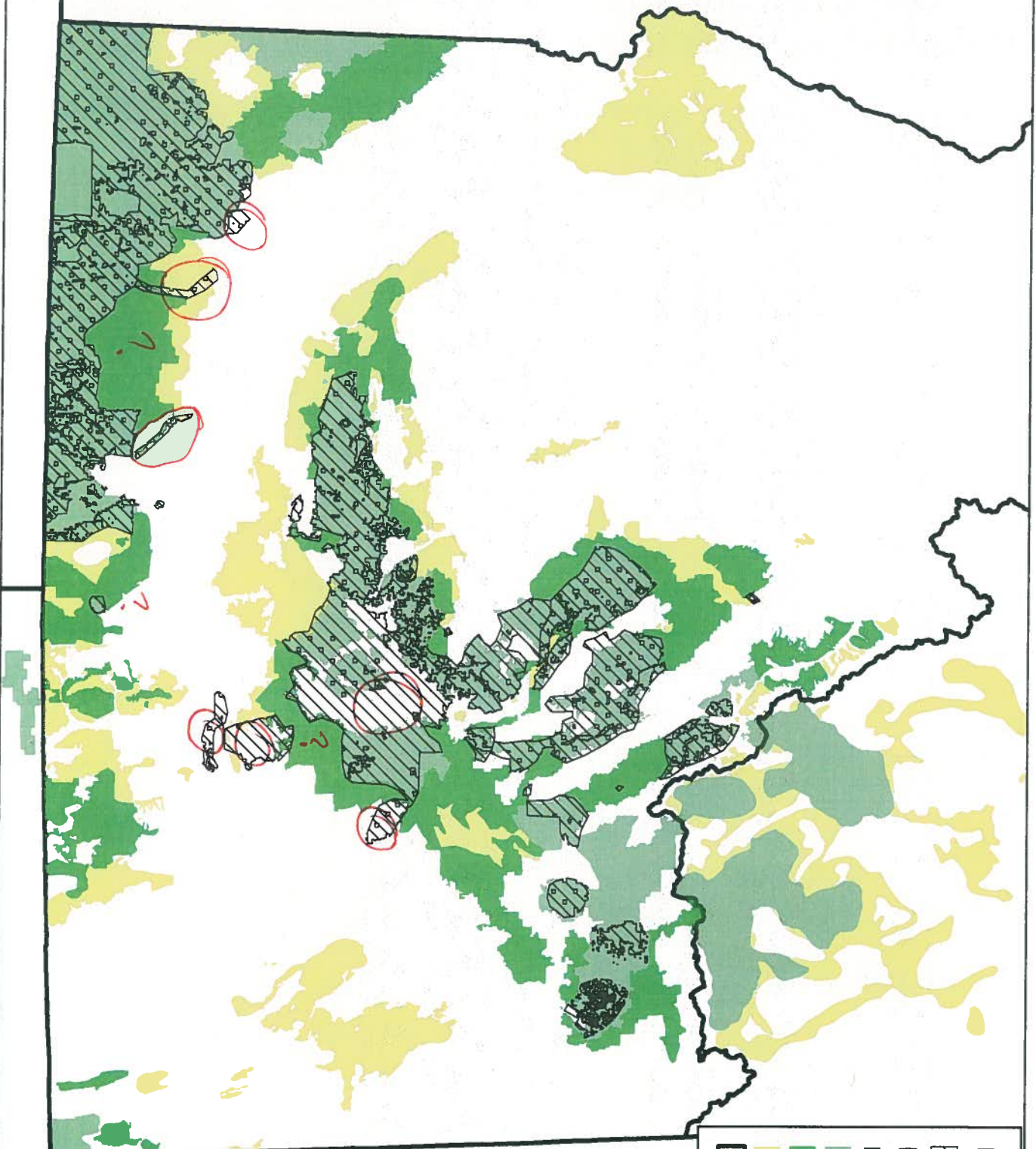
Pat Deibert, PhD
Certified Wildlife Biologist®
U.S. Fish and Wildlife Service
5353 Yellowstone Road, Suite 308A
Cheyenne, WY 82009
307-772-2374, ext. 226

got leks?



PHMA and Other Protected Federal Lands in Idaho with BLM Core/Important/General Sage-grouse Habitat

DRAFT
INTERNAL
USE ONLY



- Legend**
- PHMA/Protected Federal Lands
 - BLM CIG Habitat - 05272014
 - Management**
 - Core
 - Important
 - General
 - States

PHMA coarsly sketched from PDF.
USFWS IFWO
Feb 19 2015

1
2
3